



Executive summary

PUBLIC

Report **2023-2024**

NATIONAL STATISTICS INSTITUTE

Progress and Challenges





INTRODUCTION

The National Statistics Institute (INE) is one of the oldest state agencies of the country. INE's work centers on the compilation, elaboration, and regular publication of more than seventy statistical products, and it thus provides reliable, timely, and precise data, which play a fundamental role in decision-making in both the public and private sectors.

INE's mission is to lead, produce, and disseminate the official statistics of the country and to articulate the National Statistical System. Together with its objectives of innovation and adaptability, INE's mission contributes relevant and high-quality information to the economic, social, and demographic plans of the country.

The main challenge that INE faces in 2024 is the Population and Housing Census

INE's commitment to the development of statistics for decision-making has been essential to the work of the institution, and it has transformed INE into a key player in the elaboration, implementation, and evaluation of initiatives that affect the public. Criteria are therefore continually studied, analyzed, and adopted in accord with social changes in order to provide data that is relevant to the circumstances of the country.

The main challenge facing the institution in 2024 is the Population and Housing Census, the largest operation of national statistical offices, which INE is conducting between March and June. Census data is fundamental for updating information to meet the needs of the population and for plans and decisions that benefit society in both the public and private sectors.



Since INE's foundation in 1843, it has played an important role in the production and dissemination of official data of the country.

THE DIRECTOR'S REMARKS

Since its foundation in 1843, INE has played an important role in the production and dissemination of official data of the country. INE's work has been of strategic importance to both the public and private sectors by providing essential inputs for the elaboration of evidence-based public policies.

Today, the principal challenge is the operational development of the 2024 Population and Housing Census, a key challenge that involves great institutional effort. This process has had the permanent support of state institutions, civil society organizations, and multiple actors at the national and international level, whose commitment to know how many of us there are as well as where and how we live has enabled the deployment of the census throughout the length and breadth of our country.

In this executive summary, I invite you to review the main advances made in 2023 as well as ongoing institutional challenges in our effort to continue advancing in the production of statistics for the benefit of the public.

We thus open the space to gather comments and observations from the public on INE's institutional work, in accordance with the provisions of Law No. 20.500 on Associations and Public Participation in Public Management.

Ricardo Vicuña Poblete
National Director



▶ INE's mission and its institutional and guiding visions



Guiding Vision

To be an innovative and adaptable statistical office that contributes relevant and high-quality information to national planning.



Institutional Vision

To complete the 2024 Population and Housing Census, which will produce information of great importance for regional and national decision-making over the next ten years in both the public and private sectors.



Mission

We are the public institution in charge of guiding, producing, and disseminating the country's official statistics and articulating the national statistical system.



2024 POPULATION AND HOUSING CENSUS

Preparation and Execution

In 2023, Supreme Decree No. 86 was published in the Official Gazette, creating the National Commission for the 2024 Population and Housing Census and an interagency structure at the national, regional, provincial, and communal levels in order to coordinate the activities and participation of the organizations present in the territories for the census operation.

For preparation in the field, the precensus update was conducted in all regions of the country between March and September 2023. Its purpose was to record the number of households, their addresses, and their residents in order to support operational planning of the 2024 Census.

Similarly, between May and July, the census test was conducted in the commune of Cerrillos (Metropolitan Region) and in sectors of the communes of Alto Hospicio (Tarapacá Region), Hualpén (Biobío Region), and Padre Las Casas (Araucanía Region). The census test is a survey for comprehensively evaluating the production flow and all processes of the 2024 Census.



In the last quarter of 2023, staff recruitment and selection processes for the census operation began for the following positions: local census office coordinator, administrative manager, group coordinator, and enumerator. INE received 420,820 applications for the approximately 33,000 positions.

For census enumeration, 697 local census offices were established throughout the country, as were more than 2,700 support offices. In addition, 1,329 vehicles were secured for the movement of the teams. For security, permanent coordination was established with the responsible institutions at the national, regional, and communal levels: the Chilean police (Carabineros), the Investigations Police (PDI), and the branches of the Armed Forces.





By the end of 2023, one of the available public information channels was the Census Phone 1525, whose purpose is to attend to and convey the needs of the public and of field staff in a timely manner during census operations.

At the same time began the communication strategy, whose objective is to inform and include the public in the Population and Housing Census and to open doors for the largest statistical operation of the country.

At the beginning of 2024, INE introduced the public to the census questionnaire, which has fifty questions that are divided into four modules.

***We keep working so
that everyone opens
the door to the 2024
Census.***

The census questionnaire is the instrument with which the enumerator records information about the housing, households, and people living in Chile. Because each of its questions contributes relevant information for identifying the needs of the population, the questionnaire is of great importance.

On 9 March, the execution of the census began with an operational deployment in the field of more than 32,000 people, who use mobile capture devices for enumeration.

When enumerators have not been able to complete the census in person after visiting the home one or more times, they leave an invitation letter with an access code that assists residents in completing the online census at censo2024.cl.

In May, INE conducted a special census operation for the homeless in order to enumerate those who do not have a residence.

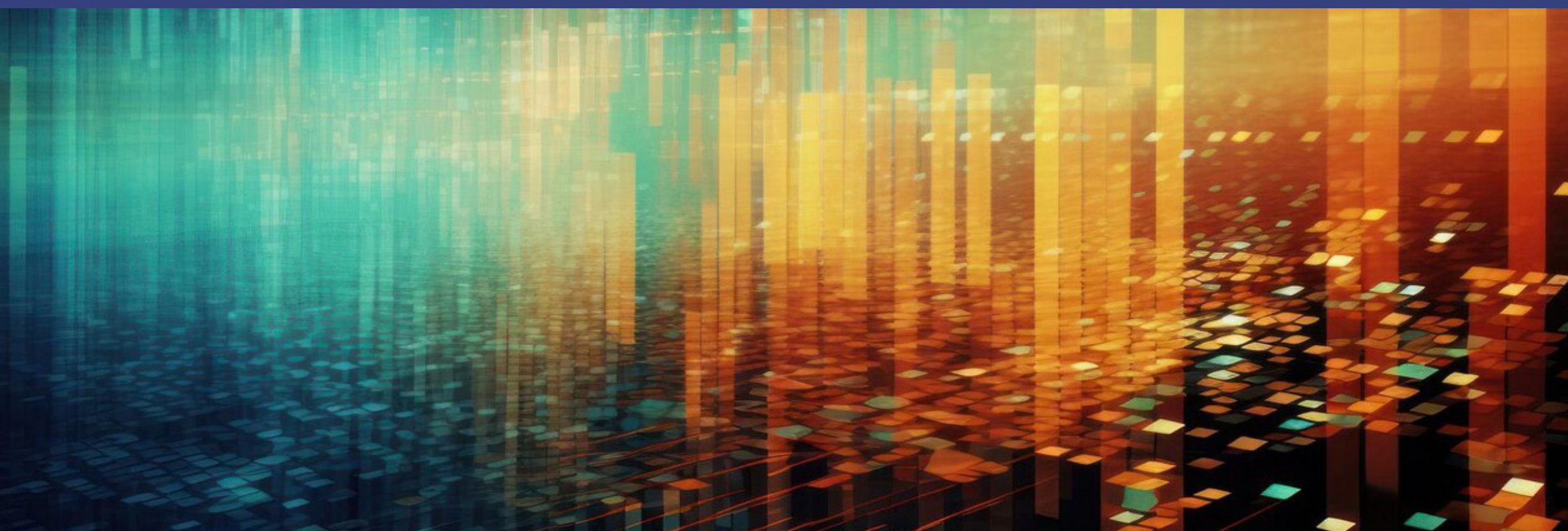
The results of the census will be provided in stages. The first stage will provide the number of dwellings and people enumerated. This information is estimated to be available in the first half of 2025. Later, towards the end of 2025 or the beginning of 2026, INE will provide the national population figures.

Today, as the census operation is being undertaken with the arduous work of enumerators, INE has visited nearly every corner of the country, through streets and to homes, in order to ensure complete coverage.

We would like to express our gratitude to all the people who have already opened their doors and participated in the census and to acknowledge the valuable effort of the communities, organizations, and local authorities who have collaborated with the dissemination and awareness of this important national task.



STATISTICAL PRODUCTION



Among the products with the highest weights in the new 2023 basket are rentals; food purchased in restaurants, cafes, and the like; new motorcars; gasoline; bread; electricity; and beef.

New products of the basket include breaded meat, vegetable beverages, vacuum cleaners, nutritional supplements, and garden and camping furniture.

Some of the products that were eliminated because of changing market trends include fixed-line telephone services, printers, cameras, and photocopy services.

Like the CPI, the Transportation Costs Index (ICT) changed its base year to construct an updated indicator that is more precise and representative of the behavior of costs associated with road freight transportation. In addition, INE created the ICT calculator, an application that readjusts figures associated with the index.

Surveys commissioned by other state institutions were also conducted in 2023. Between June and September, INE conducted fieldwork for the Survey of Activities of Children and Adolescents. This study was requested by the Ministry of Social Development and Family, and it seeks to gather information on the activities of this target group in order to improve their well-being and guarantee their rights.

INE also developed the operational tasks of the Labour Survey, which was conducted together with the Labour Directorate. The study is the official statistical source for assessing the status and development of employment and working conditions, labour relations, and gender equality in companies governed by the Labour Code of Chile.

Progress in 2023

The results of the ninth Household Budget Survey (HBS) were released. The HBS measures the expenditure and income of households in the regional capitals of the country, and it is the main source of information for updating the basket of goods and services of the Consumer Price Index (CPI) and their respective weights.

In 2023, the CPI Methodological Manual base 2023=100 and the CPI basket were published in order to provide a price indicator that is representative of household consumption in Chile.



Together with the Ministry of Social Development and Family, INE conducted the Social Well-being Survey, an instrument that is the official statistical source for producing multidimensional information on the well-being of people.

Challenges for 2024

In 2024, the National Employment Survey, the Labour Turnover Rate, the CPI, the Transport Costs Index, the Monthly Survey of Tourist Accommodation, and the Earnings and Labour Costs Indices will continue to be conducted regularly.

In the last quarter of 2024, INE plans to begin data collection for the 21st National Urban Survey on Public Safety and to gather data for the operational pilot of the new intercensal surveys, which will be conducted in the Region of Ñuble.

In 2024, the results of the following products will be presented: the tenth version of the Labour Survey, the Survey of Activities of Children and Adolescents, the Social Well-being Survey, the National Time-Use Survey, the 2023 Survey of National Urban Public Safety, and the VII Longitudinal Survey of Companies.

In January, INE began publishing preliminary monthly figures on vital statistics for the current year. In addition, provisional data for 2022 and 2023 was disseminated.

From 2024 to 2026, INE plans to work on the development of a statistical project to measure and characterize the nation's sexual diversity, in conjunction with related civil society organizations.

In 2024, INE is working on the design and operation of the National Survey on Cultural Participation. The objective of this survey is to characterize cultural participation of the national population aged over fifteen.

Finally, INE will continue its progress in the use of administrative records to optimize statistical production.

INTERNATIONAL ACTIVITIES



Collaboration with external organizations

INE participated in the 54th session of the United Nations Statistical Commission and in the XII Statistical Conference of the Americas of ECLAC, where INE gave presentations on labour statistics, statistics on children, and the Knowledge Transmission Network. In addition, INE became coordinator for four new working groups for 2023 to 2024.

For the Montevideo Consensus, Chile presented its second Voluntary National Review, which was coordinated with institutional members of the Interagency Committee. The review was presented at the Fifth Meeting of the Presiding Officers of the Regional Conference on Population and Development.

In 2023, INE participated in eighty-one international cooperation activities, which included consultations, advisory services, videoconferences, and training. INE also managed eleven financial cooperation projects in areas such as the use of administrative records and satellite images. The institution also acted as technical advisor to the National Council for the Implementation of the 2030 Agenda, and it was in charge of updating the 231 indicators of Sustainable Development Goals (SDGs) in Chile while coordinating a workshop to evaluate the process of updating the indicators.

The challenges for the following years include the continuing participation in official meetings of the United Nations Statistical Commission, the OECD Committee on Statistics and Statistical Policy, and the Statistical Conference of the Americas. With its attendance at international events, such as the World Data Forum in Medellín, Colombia, INE can continue building capacities and sharing its experience and best practices.

The annual updating of SDGs is another of INE's efforts towards interagency coordination and the improvement of the data collection system.



PUBLIC OUTREACH

The relationship with users is a determining factor for the work of the institution. Several initiatives have therefore been developed to illustrate the **importance of statistical production** and the use of reliable data for decision-making.

The implementation of educational talks in secondary and higher education institutions, public information bulletins, statistics courses, and public conferences, among other activities of INE, encourage the understanding and use of statistical data in various scenarios that occur in daily life.

These activities show the different areas (gender, employment, prices, censuses, demographics, and environment, among others) that INE studies internally to provide clear and accessible information that is useful to the community.



In addition, constant communication has been maintained with the Council of Civil Society (COSOC) as it has become an important in its approach to current issues such as the dissemination of the 2024 Census. This year, the participation of COSOC in the design of INE's quality policy is focused on strengthening the quality of service and user outreach.

Furthermore, INE has signed several cooperation agreements with institutions of higher education to establish constant communication channels and to disseminate statistical data for students of different areas of study.

Executive summary

PUBLIC Report

2023-2024



NATIONAL STATISTICS INSTITUTE

Progress and Challenges