

BIRTHS

In February 2026, there were 11,481 births.

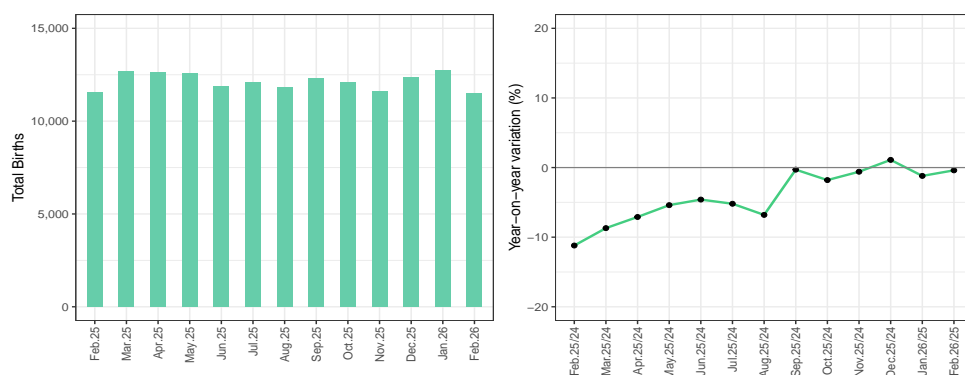
Of live births, 5,816 were males, which is 50.7% of the total, and 5,665 were females, which is 49.3%.

The number of births decreased 51 year on year, which represents a fall of 0.4%. The number of births decreased 1,236 compared to the previous month, a fall of 9.7%.

In February, the distribution of births according to the mother's age bracket was as follows: 12 live births to mothers under age 15, which was 0.1% of births, and 376 births to mothers aged 15 to 19 years, which represents 3.3% of births. The bracket with the greatest number of births was to mothers aged 30 to 34 years, in which there were 3,354 live births (29.2% of the total).

■ Births according to month of occurrence and their year-on-year variation (%).

Current figures^P, February 2026



■ Births according to mother's age bracket.

Current figures^P, February 2026¹

Births	Under age 15	15 to 19	20 to 24	25 to 29	30 to 34	35 to 39	40 to 44	45 to 49	50 and over	Not specified
Total	12	376	1,724	2,990	3,354	2,363	599	43	2	18
Percentage	0.1	3.3	15	26	29.2	20.6	5.2	0.4	0	0.2

^PProvisional figures. In this bulletin, the figures reported for February 2025 refer to a provisional database that contains registrations made in months subsequent to February 2025, and they therefore differ from the data published in the May 2025 bulletin, when the results for February 2025 were first published.

¹Because the decimals are rounded, the relative figures of the table on births according to mother's age bracket may not add up to 100%.

Births February 2026

Nationwide total	11,481
Arica y Parinacota	152
Tarapacá	339
Antofagasta	489
Atacama	212
Coquimbo	508
Valparaíso	1,047
Metropolitana	4,576
O'Higgins	643
Maule	660
Ñuble	291
Biobío	993
La Araucanía	649
Los Ríos	214
Los Lagos	559
Aysén	55
Magallanes	94

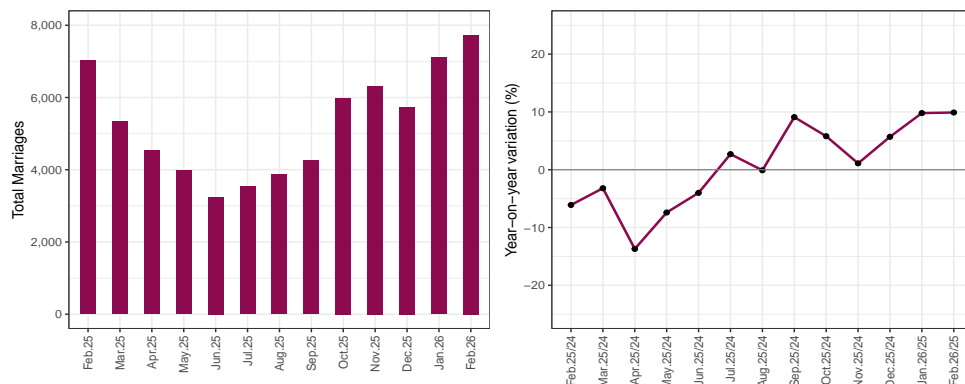
MARRIAGES AND CIVIL UNION AGREEMENTS (CUAs)

In February, there were 7,725 marriages and 1,933 Civil Union Agreements.

The number of marriages increased by 698 year on year, which is equivalent to a rise of 9.9%. There were 616 more marriages than in the previous month, which represents an increase of 8.7%.

■ Marriages according to month and their year-on-year variation (%).

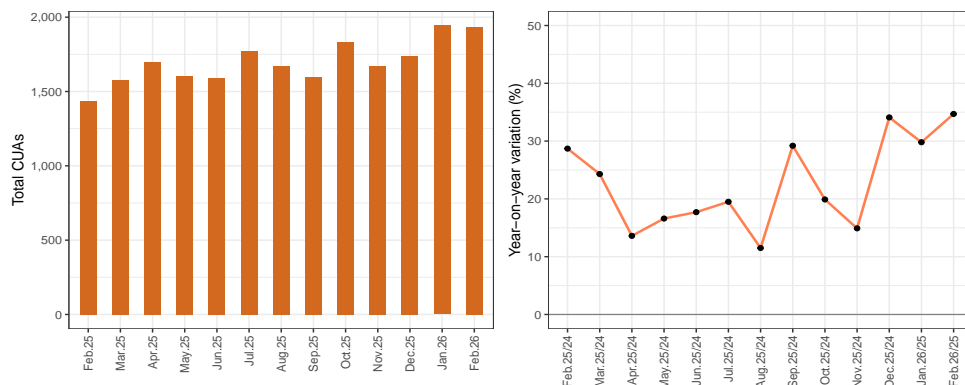
Current figures^P, February 2026



The number of CUAs rose 498 year on year, which represents an increase of 34.7%. There were 11 fewer CUAs compared to the previous month, a fall of 0.6%.

■ Civil Union Agreements according to month and their year-on-year variation (%).

Current figures^P, February 2026



Of the 1,933 CUAs in February, 1,709 (88.4%) of the couples were of different sexes. The number of CUAs between men was 87 (4.5% of the total), while the number of CUAs between women was 137 (7.1% of the total).

■ Regional distribution of CUAs according to sex of contracting parties.

Current figures^P, February 2026

CUA Sex	Arica y Parinacota	Tarapacá	Antofagasta	Atacama	Coquimbo	Valparaíso	Metropolitana	O'Higgins	Maule	Ñuble	Biobío	La Araucanía	Los Ríos	Los Lagos	Aysén	Magallanes
Total	18	42	199	47	67	179	1,003	53	59	21	78	35	14	63	15	40
Different Sexes	17	38	173	36	61	162	881	46	50	18	69	32	12	61	14	39
Same Sex Men	0	2	7	3	6	7	45	2	4	0	5	1	2	2	1	0
Same Sex Women	1	2	19	8	0	10	77	5	5	3	4	2	0	0	0	1

Marriages February 2026

Nationwide total	7,725
Arica y Parinacota	82
Tarapacá	118
Antofagasta	260
Atacama	87
Coquimbo	275
Valparaíso	750
Metropolitana	2,856
O'Higgins	373
Maule	493
Ñuble	233
Biobío	873
La Araucanía	518
Los Ríos	200
Los Lagos	481
Aysén	56
Magallanes	70

DEATHS

In February 2026, there were 8,867 deaths.

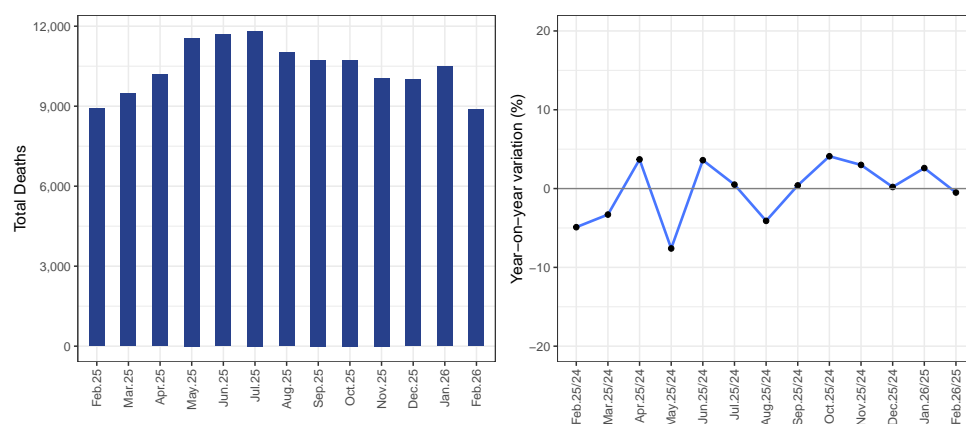
Of the total number of deaths, 4,594 were males, which represents 51.8% of the total, and 4,273 were females, which represents 48.2%.

The number of deaths decreased by 47 cases year on year, a fall of 0.5%. The number of deaths decreased by 1,611 cases compared to the previous month, which is equivalent to a fall of 15.4%.

In the February distribution of deaths by age bracket, there were 69 deaths of those aged under 1 year (0.8% of the total), the majority of which were male deaths. The greatest number of deaths occurred in those aged 60 and over, and the single bracket with the highest number of deaths was 80 to 99 years, in which there were 3,676 cases, or 41.5% of the total. Among those aged under 1 year and those aged 5 to 79, there were more male deaths than female deaths, while the trend was reversed among those aged 80 and over and those aged 1 to 4 years, in which the majority of deaths were of females.

Deaths according to month and their year-on-year variation (%)

Current figures^P, February 2026



Distribution of deaths according to sex and age bracket

Current figures^P, February 2026

Sex	Under age 1	1 to 4	5 to 19	20 to 39	40 to 59	60 to 79	80 to 99	100 and over	Not specified
Total	69	12	54	409	1,048	3,506	3,676	93	0
Male	45	5	34	295	654	2,029	1,510	22	0
Female	24	7	20	114	394	1,477	2,166	71	0
Indeterminate	0	0	0	0	0	0	0	0	0

Deaths February 2026

Nationwide total	8,867
Arica y Parinacota	167
Tarapacá	145
Antofagasta	246
Atacama	155
Coquimbo	374
Valparaíso	1,075
Metropolitana	3,227
O'Higgins	484
Maule	575
Ñuble	297
Biobío	804
La Araucanía	546
Los Ríos	206
Los Lagos	453
Aysén	37
Magallanes	76